

## Product Note Concerning Your Exablate Neuro System

Dear Exablate Users,

Your Exablate Neuro Workstation Has been updated with Software Version **7.33.098** (or higher)  
This release includes various updates and enhancements, as detailed herein:

### Treatment Kit Code Selection:

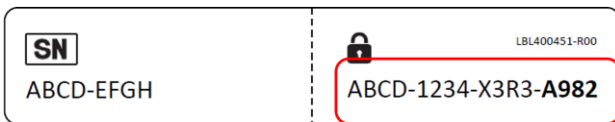
Treatment kits and membranes are labeled and designed for single use only.

For the safety of the patient, the system will not allow additional treatments to be initiated with a membrane that has already been used, or if a membrane is past its expiry, or if there is a membrane\system configuration mismatch.

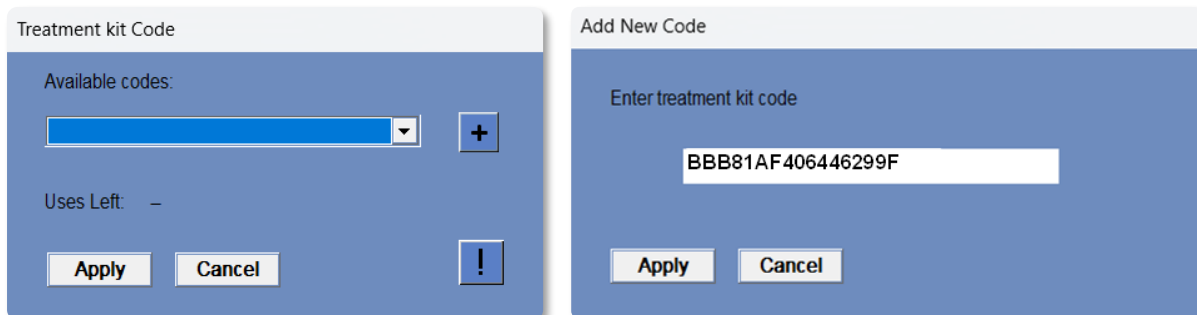
To track this, each membrane is fitted with a unique 16-character code.

This code can be found on the treatment membrane packaging label, and also affixed to the membrane coil, if using the head coil membranes designed for use with 1.5T MRI scanners.

Example of label design:



Upon Entrance to TREATMENT mode, you will be prompted to select a treatment kit code.  
Press the “+” icon to enter the code supplied with your treatment kit.



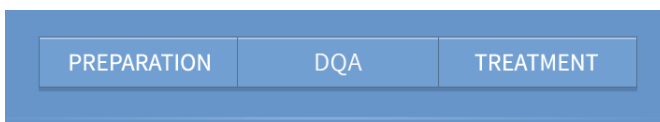
In case of an extenuating circumstance where there is no valid code for the treatment (e.g. loss of code or system restart mid-treatment), press the “!” icon to activate the Manual Override mode which enables entering the treatment without a valid code.

**Note:** The number of available override codes is limited. Please contact your Insighttec representative if less than 4 override codes remain.

### Daily Quality Assurance (DQA) Mode:

Entrance to DQA mode is now done through dedicated “DQA” entrance button.

When Entering “DQA” or “TREATMENT” modes the treatment profile is automatically set, thus there is no need to manually select a profile anymore.



**Additional SW updates:**

- Safeguards to avoid central-frequency (CF) mismatches:
  - Loading of images blocked if no calculated CF value exists.
  - Loading of images blocked if selected image CF value differs from calculated value.
  - Reminder to couple Movement Detection image acquisition with planning images, if manually loaded.
- Increased timeout to allow auto-retrieval of “scan prepared” sequences with longer MR recon times .
- Support for Japanese characters with planning image data.
- Auto CPC restart disabled to prevent unnecessary system restarts.
- Treatment export archive files are password-protected to safeguard patient privacy and protect intellectual property.
- Updated technical support contact information.

**Additional updates:**

- Update to kit storage recommendations: “Keep in a cool and dry place “.
- DQA Gel Validated for use in up to five DQA sessions.

Kind Regards,

The Exablate Neuro Product and Field training teams